

# Christmas at Winchester Cathedral



"Winchester holds its own with any European destination for those in search of an authentic Christmas experience. The Cathedral and its Close are at the heart of the community with an Ice Rink, Christmas Market and Christmas services and events. Even a live Nativity on Sundays!"

The Very Reverend James Atwell  
Dean of Winchester



WINCHESTER  
CATHEDRAL

# CHRISTMAS SERVICES AND MUSIC AT THE CATHEDRAL

## Advent Carol Service

Sat 26 Nov at 6.30pm

-----

Carols for Advent sung by the full Cathedral Choir

## Advent Sunday

Sun 27 Nov

-----

10am: Sung Eucharist  
3.30pm: Choral Evensong

## Carols at the Cathedral

Fri 9 Dec at 2.30pm

-----

Lay Clerks and guest sopranos sing a programme of popular carols.

Tickets: £6.50 from the Cathedral Box Office

## Advent Concert by the Cathedral Chamber Choir

Sun 11 Dec at 1.30pm

-----

Free admission  
(retiring collection)

## The Lord Lieutenant's Christmas Concert

Fri 16 Dec at 7pm

-----

Popular Christmas carols and readings presented by Alan Titchmarsh and featuring the Cathedral Choir. Tickets: £27.50, £22.50, £20.00, £17.50 and £12.50 from the Cathedral Box Office

## A Christmas Celebration

Sun 18 Dec at 3.30pm

-----

Afternoon Carol Service sung by the Cathedral Choir especially for shoppers at the Christmas Market

## Cathedral Carol Services

Mon 19, Tue 20 and  
Thu 22 Dec at 6.30pm

-----

The first service is ticketed. Free tickets are available from the Cathedral Box Office from 14 Nov. The remaining two are not ticketed and all are welcome. Tickets can be purchased for candlelit suppers in the Cathedral Refectory following each service, also available from the Cathedral Box Office from 14th Nov

## Britten's Ceremony of Carols

Fri 23 Dec at 1pm

-----

Sung by the Girl and Boy Choristers. Free admission (retiring collection)

## Christmas Eve

Sat 24 Dec

-----

11am and 3pm: Family Service (children invited to dress as characters from the Nativity)  
5.30pm: Choral Evensong and blessing of the Crib  
11.30pm: Midnight Eucharist

## Christmas Day

Sun 25 Dec

-----

8am: Holy Communion  
10am: Choral Mattins  
11.15am: Sung Eucharist  
3.30pm: Choral Evensong





# LANTERNS AT CHRISTMAS

Sponsored by

**Waitrose**

## Lantern Making workshops

Sat 12, Sun 13,  
Sat 19 & Sun 20 Nov

Venue: Ground floor unit, Brooks  
Shopping Centre, Winchester  
(access via Middle Brooks Street)

Times: 10am – 12.30pm and  
1pm – 3.30pm

Cost: £5 per lantern, tickets from  
the Cathedral Box Office

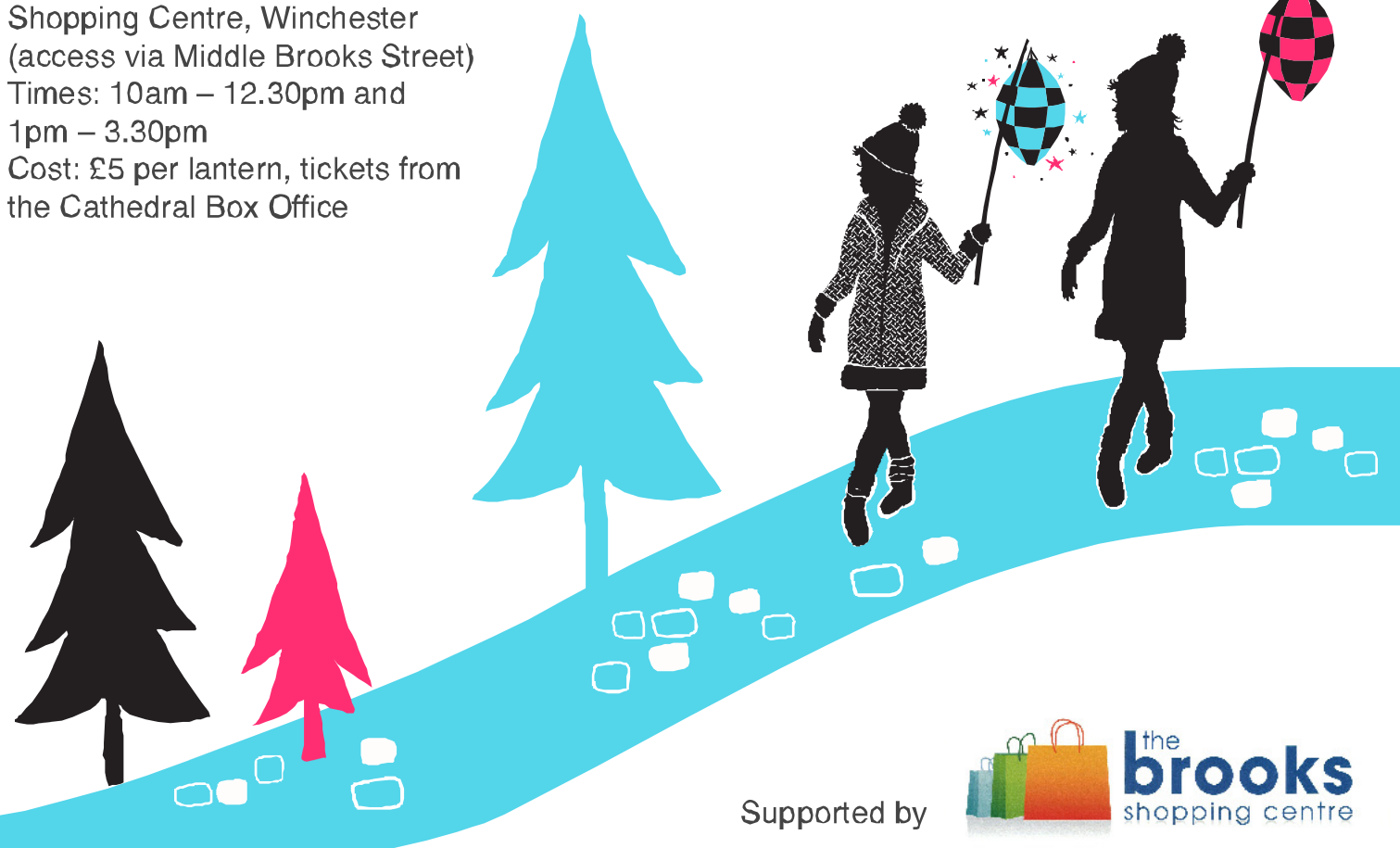
## Lantern Procession and Opening Ceremony

Thu 24 Nov at 6pm, The Great Hall

This stunning lantern parade marks the opening of the Christmas Market and Ice Rink. The parade will start at the Great Hall at 6pm and make its way to the Cathedral for 6.30pm for the official opening ceremony led by the Dean of Winchester, with ice skating display and fireworks.

To take part in this great community event you'll need to attend two of the public lantern making workshops. Lanterns take approximately four hours to make – they're fun to make but do require patience and commitment! We'd like as many people to take part as possible so come on your own or bring your family, friends, colleagues and build a lantern together (max 4 people per lantern).

Lantern bearers must be at the Great Hall at 5pm for lanterns to be fitted with carry poles, safety checked and lit. Prizes available for the best lanterns!



Supported by

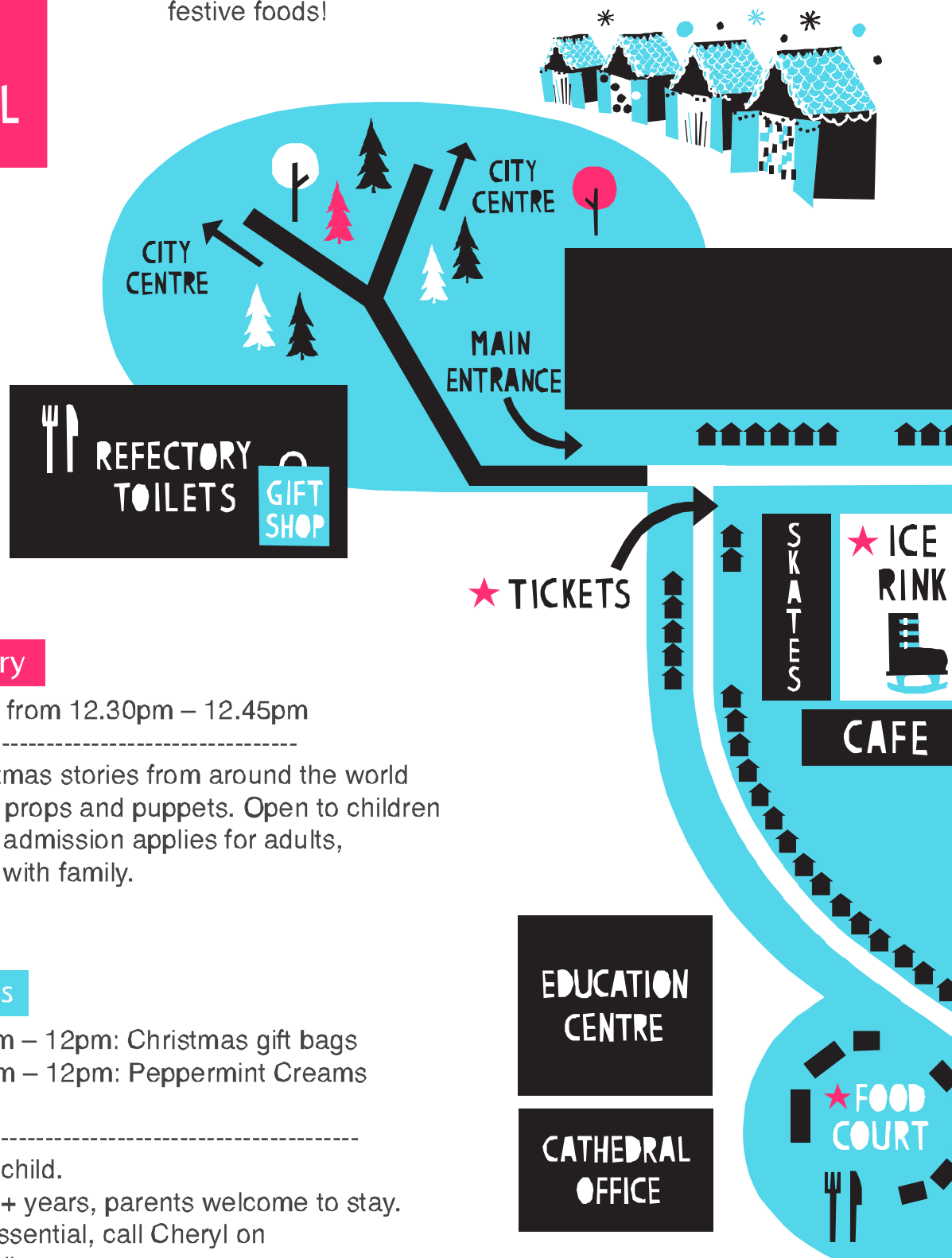


## Christmas Market

Thu 24 Nov – Wed 21 Dec

Open every day from 10am, closing at 6pm Sun – Wed and 7.30pm Thu – Sat. Renowned for its unique location, high quality exhibitors and bustling atmosphere. Find nearly 100 beautifully decorated wooden chalets stunningly situated at the foot of the Cathedral in the historic Inner Close brimming with Christmas gifts, decorations and festive foods!

## EVENTS AT THE CATHEDRAL



## The Christmas Story

Mon 19 – Thu 22 Dec from 12.30pm – 12.45pm

Hear wonderful Christmas stories from around the world retold with the help of props and puppets. Open to children of all ages. Cathedral admission applies for adults, free entry for children with family.

## Children's activities

Tue 20 Dec from 10am – 12pm: Christmas gift bags  
Thu 22 Dec from 10am – 12pm: Peppermint Creams and Gift Boxes

Admission: £2.00 per child.  
Suitable for children 7+ years, parents welcome to stay.  
Advance booking is essential, call Cheryl on 01962 857224 or email [cheryl.bryan@winchester-cathedral.org.uk](mailto:cheryl.bryan@winchester-cathedral.org.uk)

## Ice Rink

Thu 24 Nov – Mon 2 Jan

Open from 11am (10am from 17 Dec), last session starts at 7.30pm (closed Christmas Day) Experience an exhilarating **skate under the stars with friends and family at this beautiful open-air real ice rink**. 1 hour sessions include skate hire and time for skate fit.

Minimum age limit is 4 years although sessions for 2+ years are available at 9.45am, Mon – Fri until 16 Dec. Tickets: £9.50 adult, £7.50 concessions, £5 children aged 4-7, £30 family (2 adults + 2 children) available from the Cathedral Box Office. Further price options, group packages and terms and conditions can be found online. Booking fees apply for online and telephone bookings.



## WINCHESTER CATHEDRAL

## BRITISH CRAFT VILLAGE

## THE DEANERY BOOK SHOP

← WATERGATE  
ENTRANCE / EXIT

↑  
ENTRANCE / EXIT

## Themed Tower Tours

Sat 26 Nov – Fri 23 Dec at 12.15pm,  
2.15pm and 3.30pm

Enjoy **spectacular views across the city and the Cathedral Close** followed by tea/coffee (Christmas Tours) or mulled wine (Twilight Tours) and mince pies. Tickets: £8.50/£13.50 from the Cathedral Box Office.

- ★ LIVE NATIVITY
- ★ NATIVITY SCENE
- ★ MISSION CHALET

## Live Nativity

Sundays, 27 Nov - 18 Dec, 10am – 6pm

Meet Mary, Joseph, baby Jesus and animals in their stable at the Christmas Market. Free admission.





Full contact details and descriptions for all Christmas Market exhibitors can be found on the Cathedral website. Some exhibitors are not listed here.

Exhibiting 24 Nov–21 Dec

### Alexander Interiors

[www.alexanderinteriors.co.uk](http://www.alexanderinteriors.co.uk)  
[info@alexanderinteriors.co.uk](mailto:info@alexanderinteriors.co.uk)

### Atlas (London) LTD

[www.atlaslondon.co.uk](http://www.atlaslondon.co.uk)  
020 8672 2254

### Bath Aqua Glass

[www.bathaquaglass.com](http://www.bathaquaglass.com)  
01225 319 606

### Bubbles

[www.bombcosmetics.co.uk](http://www.bombcosmetics.co.uk)  
07780 888 999

### Chi - Africa LTD

[www.recycledmetalsculptures.co.uk](http://www.recycledmetalsculptures.co.uk)  
01243 783 442

### Circle & Dash

[www.circleanddash.com](http://www.circleanddash.com)  
[circleanddash@btinternet.com](mailto:circleanddash@btinternet.com)

### Cranborne House

[www.cranbornehouse.co.uk](http://www.cranbornehouse.co.uk)  
01953 885 443

### Fairygoodies

[www.fairyglass.co.uk](http://www.fairyglass.co.uk)  
[sales@fairygoodies.co.uk](mailto:sales@fairygoodies.co.uk)

### Findfuchs

[www.artisticpolishpottery.co.uk](http://www.artisticpolishpottery.co.uk)  
[stevehumphreys8@hotmail.com](mailto:stevehumphreys8@hotmail.com)

### Glover & Smith

[www.gloverandsmith.co.uk](http://www.gloverandsmith.co.uk)  
01722 741 096

### Gourmet Farm / Liege Waffles

[michaelwilford@tiscali.co.uk](mailto:michaelwilford@tiscali.co.uk)  
01202 425 222

### Heyland & Whittle

[www.heylandandwhittle.co.uk](http://www.heylandandwhittle.co.uk)  
01293 863 606

### I Love Boutique

[www.iloveboutique.co.uk](http://www.iloveboutique.co.uk)  
[c.l.claxton@hotmail.co.uk](mailto:c.l.claxton@hotmail.co.uk)

### Indigo Flair

[www.indigoflair.co.uk](http://www.indigoflair.co.uk)  
01264 782 281

### It's My Bag!

[www.itsmybagonline.co.uk](http://www.itsmybagonline.co.uk)  
[maddy@itsmybagonline.co.uk](mailto:maddy@itsmybagonline.co.uk)

### Jackdaw Moroccan Lanterns

[www.jackdawmoroccanlanterns.co.uk](http://www.jackdawmoroccanlanterns.co.uk)  
01684 893 649

### Jardin de France

[www.jardin-defrance.com](http://www.jardin-defrance.com)  
07811 391 550

### Johnd

[lindy@pashmina-uk.co.uk](mailto:lindy@pashmina-uk.co.uk)  
0118 976 1637

### Josephine Chisholm - Artist

[www.josephinechisholm-artist.co.uk](http://www.josephinechisholm-artist.co.uk)  
[josephine.chisholm@gmail.com](mailto:josephine.chisholm@gmail.com)

### La Maison des Saucissons

[aline8@voila.fr](mailto:aline8@voila.fr)  
0033 622 743 984

### Little Village Sweet Shop

[www.littlevillagesweetshop.com](http://www.littlevillagesweetshop.com)  
01962 738 880

### Mad Lou Publishing / Mae House

[www.madloupublishing.co.uk](http://www.madloupublishing.co.uk)  
01730 268 697

### New Forest Cider

[www.newforestcider.co.uk](http://www.newforestcider.co.uk)  
[info@newforestcider.co.uk](mailto:info@newforestcider.co.uk)

### Paper High

[www.paperhigh.com](http://www.paperhigh.com)  
01273 236 685

### Paul Sansome Photography

[www.paulsansome.com](http://www.paulsansome.com)  
07723 356 868

### Paula Jones Art

[www.paulajonesart.co.uk](http://www.paulajonesart.co.uk)  
01872 279 748

### Pollyfields

[www.pollyfields.co.uk](http://www.pollyfields.co.uk)  
01271 858 804

### Portobello Road Pottery

[www.portobelloroadpottery.com](http://www.portobelloroadpottery.com)  
07597 929 126

### Pure Spain

[www.purespain.co.uk](http://www.purespain.co.uk)  
01305 458 166

### Saint Elisabeth Convent

[www.obitel-minsk.by](http://www.obitel-minsk.by)  
0037 517 289 0159

### Sano Bazaar

[www.sanobazaar.co.uk](http://www.sanobazaar.co.uk)  
01647 433 081

### Silkwood Traders Lacquered Wood

[www.silkwoodtraders.com](http://www.silkwoodtraders.com)  
01273 884 587

### Silver & Sand

[www.silverandsand.co.uk](http://www.silverandsand.co.uk)  
01271 867 140

### Smokincraft

[smokincraft@gmail.com](mailto:smokincraft@gmail.com)  
07946 166 873

### Soizic's Pancakes

[francoise.marbach040@orange.fr](mailto:francoise.marbach040@orange.fr)  
0033 626 917 367

### Stardome

[stardome@live.co.uk](mailto:stardome@live.co.uk)  
07802 254 631

### S.Travers-Dade

[stuarttd@yahoo.com](mailto:stuarttd@yahoo.com)  
07949 150 838

### Thang Tho

[www.thebigmango.co.uk](http://www.thebigmango.co.uk)  
0207 093 2424

### The Contemporary Home

[www.tch.net](http://www.tch.net)  
02392 469 400

### The Naked Goat

[thenakedgoat@yahoo.co.uk](mailto:thenakedgoat@yahoo.co.uk)  
07986 058 735

## The Old Vine

www.oldvinewinchester.com  
01962 854 616

## The Natural Light Company

www.naturallightcompany.co.uk  
01243 379 004

## The Potting Shed

www.pottingshedonline.co.uk  
info@pottingshedonline.co.uk

## Timber-Treasures

www.timber-treasures.co.uk  
07809 867 172

## Tinklertastic

www.tinklertastic.co.uk  
07762 928 771

## Tom Critchley

tncrit@aol.com  
01892 862 330

## Vida Vida

www.vidavida.co.uk  
07737 215 927

## West Country Interior

www.westcountrysolar.com  
07759 916 504

## Wild at Heart

gill@bewildatheart.co.uk  
07941 805 863

## Wonderland

www.fusebags.com  
07974 393 688

## Zipper bags

www.just1zip.com  
just1zip@gmail.com

## Zumo

www.zumosilk.com  
stevie@zumosilk.com

Exhibiting 24 Nov – 7 Dec

## Borlace Foskett

www.borlacefoskett.co.uk  
01590 610 157

## Clementine Toys

www.clementinetoy.com  
info@clementinetoy.com

## Global Seesaw

www.globalseesaw.co.uk  
0208 819 5799

## Indigo Boo

www.indigoboo.com  
01476 879 055

## it's a bead thing....

roy-roz@braemar-close.fsnet.co.uk  
01483 429 948

## Joe Low Photographer

www.joelow.com  
01962 877322

## Just the Thing

www.just-the-thing.co.uk  
lucy@just-the-thing.co.uk

## Lamasat

www.lamasat.co.uk  
0208 654 1550

## Mibi Gift & Home

www.mibi.co.uk  
01962 711 420

## Moorlight

www.premgit.co.uk  
01822 854 052

## Palanquin Flair

palanquinflair@aol.com  
01229 860 222

## Talbot & Spooner

www.handmadeinhampshire.co.uk  
www.hungdrawnquoted.co.uk

## The Fox in the Forest

www.thefoxintheforest.co.uk  
thefoxintheforest@gmail.com

## Vinegar Hill Pottery

www.davidrogerspottery.co.uk  
01590 642 979

Exhibiting 8 - 21 Dec

## Alison Gardiner

www.alisongardiner.com  
02392 755 378

## Andy Stevenson Garden Sculpture

andystevensongardensculpture.co.uk  
07725 079 669

## Buta & Buti

www.but aandbuti.com  
kate@but aandbuti.com

## Caroline Gardner Knitwear

www.cgknit.co.uk  
caroline.gardner@gmail.com

## Cashmeres of Scotland

www.cashmeres-of-scotland.com  
01835 863 306

## Clubmatters

www.clubmatters.co.uk  
01962771275

## Gallardo & Blaine Designs

www.gallardoblainedesigns.co.uk  
07751 170 073

## Glenalmond Tweed Company

www.glenalmond.com  
01738 880 322

## HAM

www.hammade.com  
07583 910 222

## Jackie Brazil

www.jackiebrazilworld.com  
clare@jackiebrazilworld.com

## Lumina Jewellery

www.luminajewellery.com  
01189 861 856

## Mr and Mrs Santa Claus

www.mrandmrssantaclaus.co.uk  
01962 771 808

## Peony Scarves

www.peonyonline.co.uk  
0845 221 1337

## Sally Cantan and Robert Goldsmith

sallycantan@gmail.com  
www.selbornepottery.co.uk

## Scarlet Bakes

www.scarletbakes.co.uk  
07920 260 744

## Thinking of Gothic

leedavid700@gmail.com  
0208 461 1416

## Wacky Shack Candles

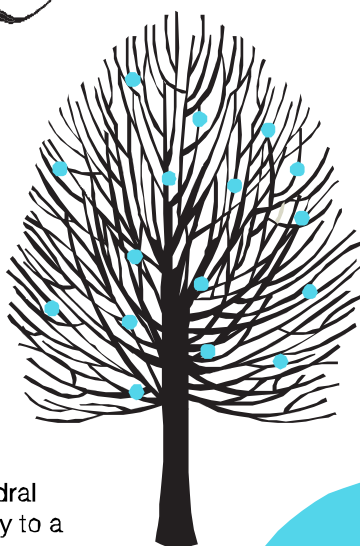
www.wackyshackcandles.co.uk  
01305 251 952

DISCOVER...

# Winchester Cathedral

## Visit us...

For over a thousand years, people have come to seek inspiration in this magnificent Cathedral. Today, we welcome 300,000 visitors a year to share in our worship, explore our heritage and attend our many events. Come and discover the Cathedral for yourself. Buy an annual pass from the Cathedral or Gift Shop and enjoy free admission to the Cathedral for a year and free entry to a selection of exhibitions, concerts and tours.



## Gift Shop

Open from 9.30am – 5.30pm every day, and until 6pm during the Christmas Market. Find us directly opposite the Cathedral's main entrance, in a pretty single-floor restored coach house and online. Offering a huge selection of Christmas gifts, decorations and CDs, including the Cathedral Choir's 'Christmas from Winchester' and the highly acclaimed 'Howells: The Winchester Service'.

CATHEDRAL

REFECTORY

GIFT SHOP



## Major events 2012

We have some very special events planned for 2012 which we're sure you will love. For the latest news visit the website and sign up for our monthly e-newsletter.



## Refectory

Open from 9.30am – 5pm every day  
One of Winchester's hidden gems. Its award-winning contemporary design, large terrace and pretty walled garden make it a great place to meet friends for a coffee, lunch or afternoon tea. Enjoy delicious home-cooked meals and freshly baked cakes and biscuits.

